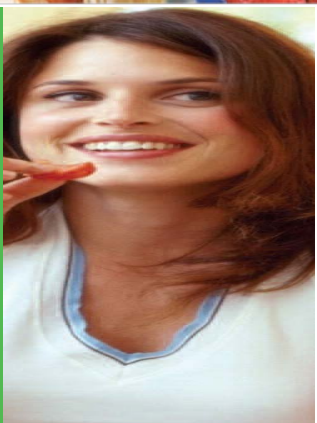


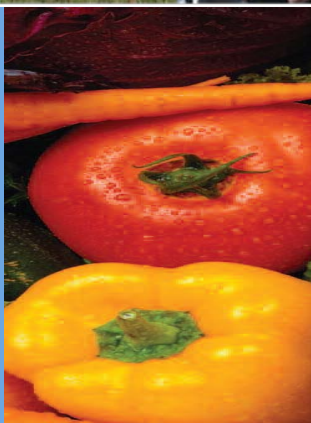


**How to
STOP
The toxic
Shock to
YOUR
System!**



These (and other) healthy foods could be virtual poison to your particular system.

Relieve migraines, chronic headaches, arthritic pain, chronic fatigue, digestion problems, ADHA and more by discovering YOUR personal food toxicities!



Food toxicity and you...

insights you need to know from people who've been there:

"I had been heavy all my life. It turns out my body was under constant attack from more than 20 different foods I was eating regularly that were poison to my particular system. When your body's under that much stress, it's nearly impossible to lose weight. I've lost 60 pounds in six months. I'm eating as much as I want, I've just changed the types of foods I'm eating and the pounds melted away. No one I know can believe it. I've sent 15 people to take this test and every one of them has had excellent results by removing their particular food toxicities." –55 year old

STOP the toxic shock to your system

A 28 year ongoing study reveals that 95% of the population has what is known as a "type two" toxic reaction (IgG response) to common everyday foods that you eat regularly. Unfortunately the foods that cause this toxic shock vary widely according to your individual system. "Type two" reactions are delayed reactions (explained fully in this report), so they are very difficult to detect on your own.

95 out of 100 people are poisoning themselves and don't even know it!

Are you one of them?

Take this simple [questionnaire](#) to see if you could benefit from this...

Various Tests Available

Submit or print the results for Dr. Horn to review so he can counsel with you to determine which tests are appropriate for your personal needs.

FOOD IS YOUR FIRST AND BEST MEDICINE when you know which foods are right for you:

Which foods are toxic?

Different foods break down at different speeds, causing different toxic reactions depending upon the food and your personal body chemistry. Therefore, without scientific testing, it is very difficult to judge which foods cause which reactions and when.

Symptoms associated with food toxicity

Digestive Tract	Energy & Activity	Other	Nose	Ears	Emotions
Diarrhea	Fatigue	Irregular heartbeat	Stuffy nose	Itchy ears	Mood swings
Constipation	Sluggishness	Rapid heart	Sinus problems	Ear aches	Anxiety, fear
Bloated feeling	Apathy	Chest pains	Hay fever	Ear infections	Irritability, anger
Belching	Hyperactivity	Frequent illness	Excessive mucous	Drainage from ear	Depression
Passing gas	Restlessness			Ringing in ears	Aggressiveness
Stomach pains				Hearing loss	Nervousness
	Head	Skin	Joint & Muscles	Mind	
	Headaches	Acne	Joint pain	Poor memory	
	Faintness	Hives, rashes	Arthritis	Confusion	
	Dizziness	Hair loss	Stiffness	Poor concentration	
	Insomnia	Flushing, hot flashes	Muscle aches		
			Feeling of weakness		